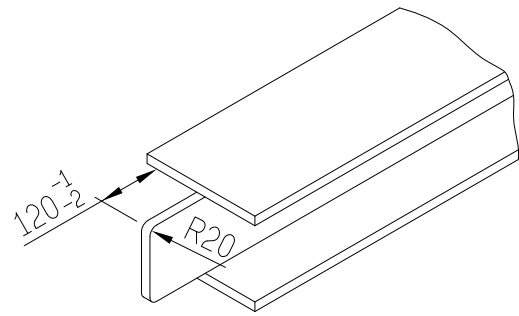


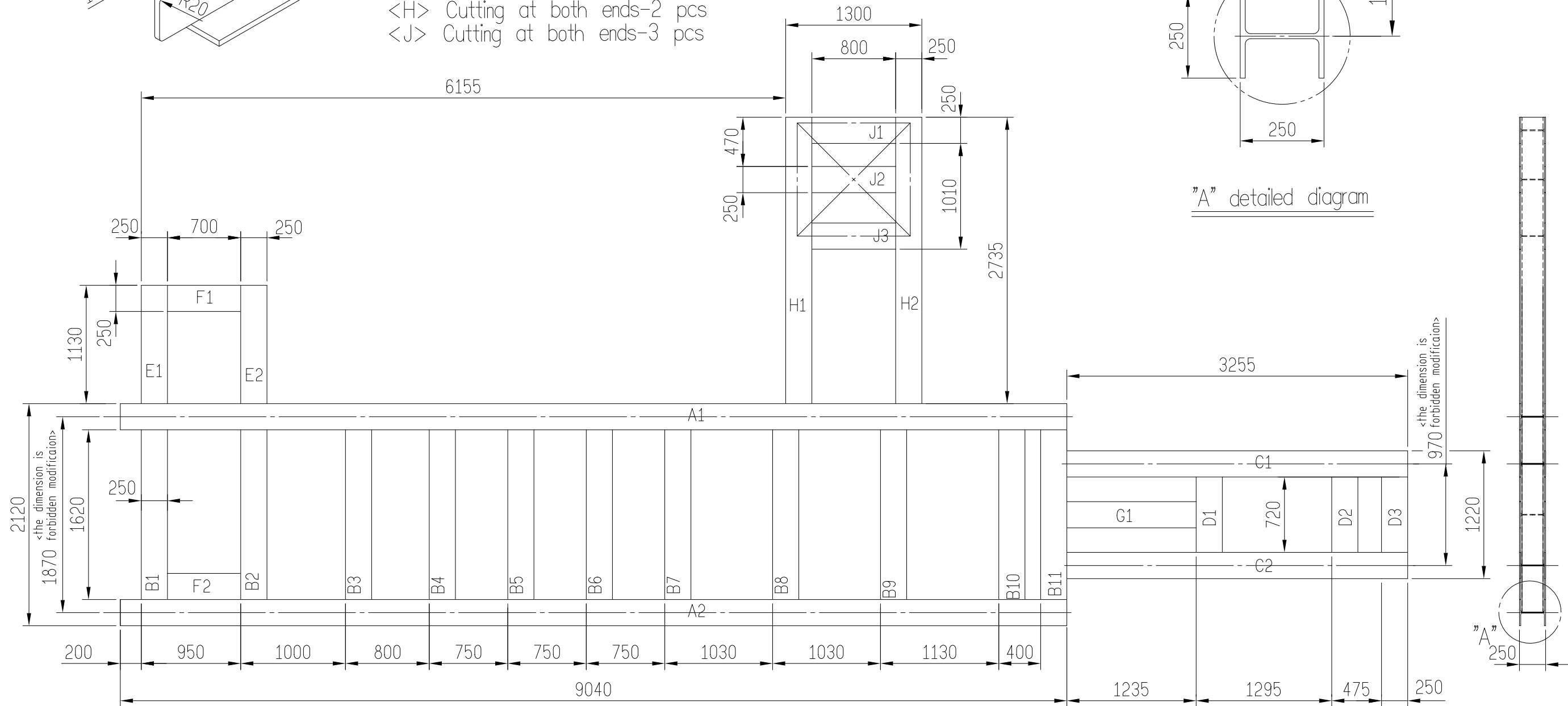
*There cannot be any fixed interference in the area of tie bar pulling out

Remark:
 <01>Fasten rebar by steel wire & put H beam on top of it, ensure its levelling by level gauge.
 <02>Cast H beam into concrete base, careful not to shift it during liquid concrete pouring.
 <03>Foundation H beam specs:250X250.
 <04>Mixing ratio of concrete : cement/sand/gravel/ :1:2:3.

<If there is any change on the dimension, also please change A relatively.>



- Cutting at both ends-11 pcs
- <C> One end cutting-2 pcs
- <D> Cutting at both ends-3 pcs
- <E> One end cutting-2 pcs
- <F> Cutting at both ends-2 pcs
- <G> Cutting at both ends-2 pcs
- <H> Cutting at both ends-2 pcs
- <J> Cutting at both ends-3 pcs



Material:

- | | |
|----------------------------------|---------------------------------|
| <A> 250X250 H-steel X9040L-2Pcs | <F> 250X250 H-steel X940L-2Pcs |
| 250X250 H-steel X1860L-11Pcs | <G> 250X250 H-steel X1475L-1Pc |
| <C> 250X250 H-steel X3375L-2Pcs | <H> 250X250 H-steel X2855L-2Pcs |
| <D> 250X250 H-steel X960L-3Pcs | <J> 250X250 H-steel X1040L-3Pcs |
| <E> 250X250 H-steel X1250L-2Pcs | |

Remark:<01>If H-steel specification be change,that 1620 and 2120L must be change.<Because dimension 1870 and 970L don't change>.



鋁台精機廠股份有限公司
ZITAI-PRECISION MACHINERY CO., LTD

MODEL ZDC-1800T No.

R6DEBASE2

Applied sect

H steel frame soldering drawing for M/C foundation