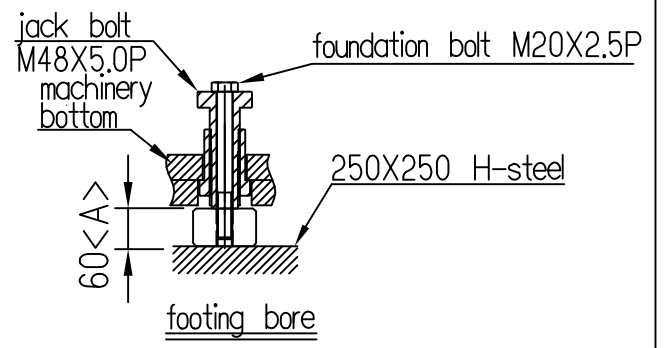
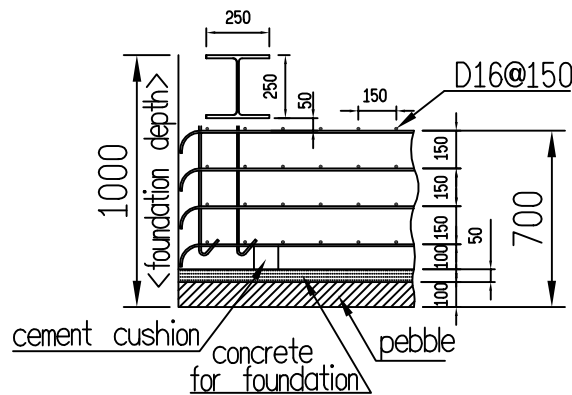
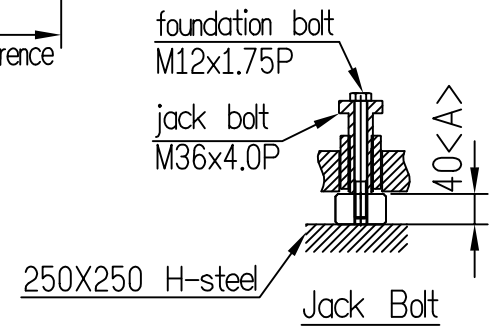


\*There cannot be any fixed interference in the area of tie bar pulling out



Remark:

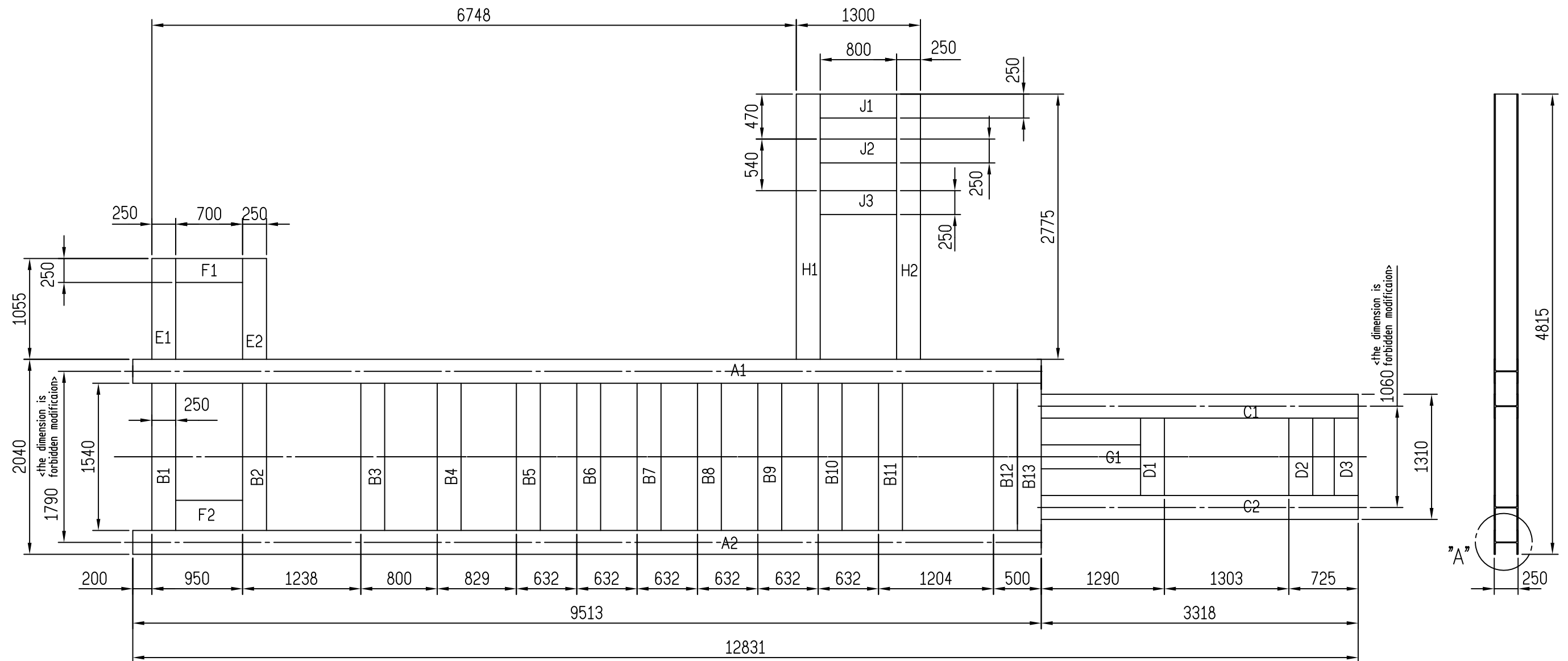
<01>.Fasten rebar by steel wire & put H beam on top of it, ensure its levelling by level gauge.

<02>.Cast H beam into concrete base, careful not to shift it during liquid concrete pouring.

<03>.Foundation H beam specs:200X200.

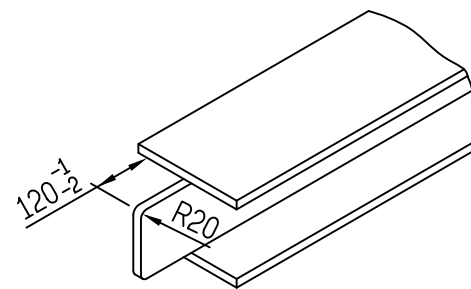
<04>.Mixing ratio of concrete : cement/sand/gravel/ :1:2:3.

	鋁台精機廠股份有限公司 ZITAI-PRECISION MACHINERY CO., LTD	MODEL	ZDC-2000T	No.	UOCZDEA150	Applied sect	Machinery installation
--	---	-------	-----------	-----	------------	--------------	------------------------

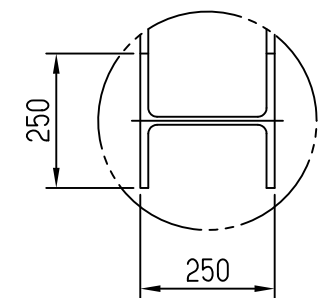


Material:

- <A> 250X250 H-steel X9513L-2Pcs
- <B> 250X250 H-steel X1780L-13Pcs
- <C> 250X250 H-steel X3438L-2Pcs
- <D> 250X250 H-steel X1050L-3Pcs
- <E> 250X250 H-steel X1175L-2Pcs
- <F> 250X250 H-steel X940L-2Pcs
- <G> 250X250 H-steel X1280L-1Pc
- <H> 250X250 H-steel X2895L-2Pcs
- <J> 250X250 H-steel X1040L-3Pcs



- <B> Cutting at both ends-13 pcs
- <C> One end cutting-2 pcs
- <D> Cutting at both ends-3 pcs
- <E> One end cutting-2 pcs
- <F> Cutting at both ends-2 pcs
- <G> Cutting at both ends-1 pc
- <H> One end cutting-2 pcs
- <J> Cutting at both ends-3 pcs



"A" detailed diagram

Remark:<01>If H-steel specification be change,that 1540 and 2040L must be change.  
<Because dimension 1790 and 1060L don't change>.

1:45

Applied sect	H steel frame soldering drawing for M/C foundation-2000T
No.	U6DEBASE