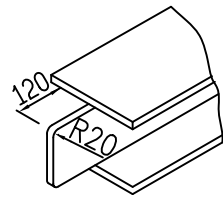
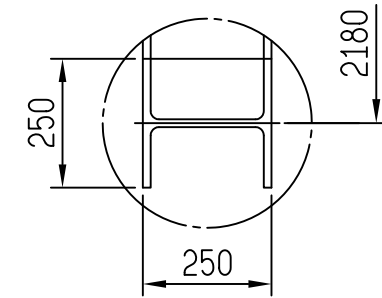


Remark:
 <01>Fasten rebar by steel wire & put H beam on top of it , ensure its levelling by level gauge.
 <02>Cast H beam into concrete base , careful not to shift it during liquid concrete pouring.
 <03>Foundation H beam specs:250X250.
 <04>Mixing ratio of concrete : cement/sand/gravel/ :1:2:3.

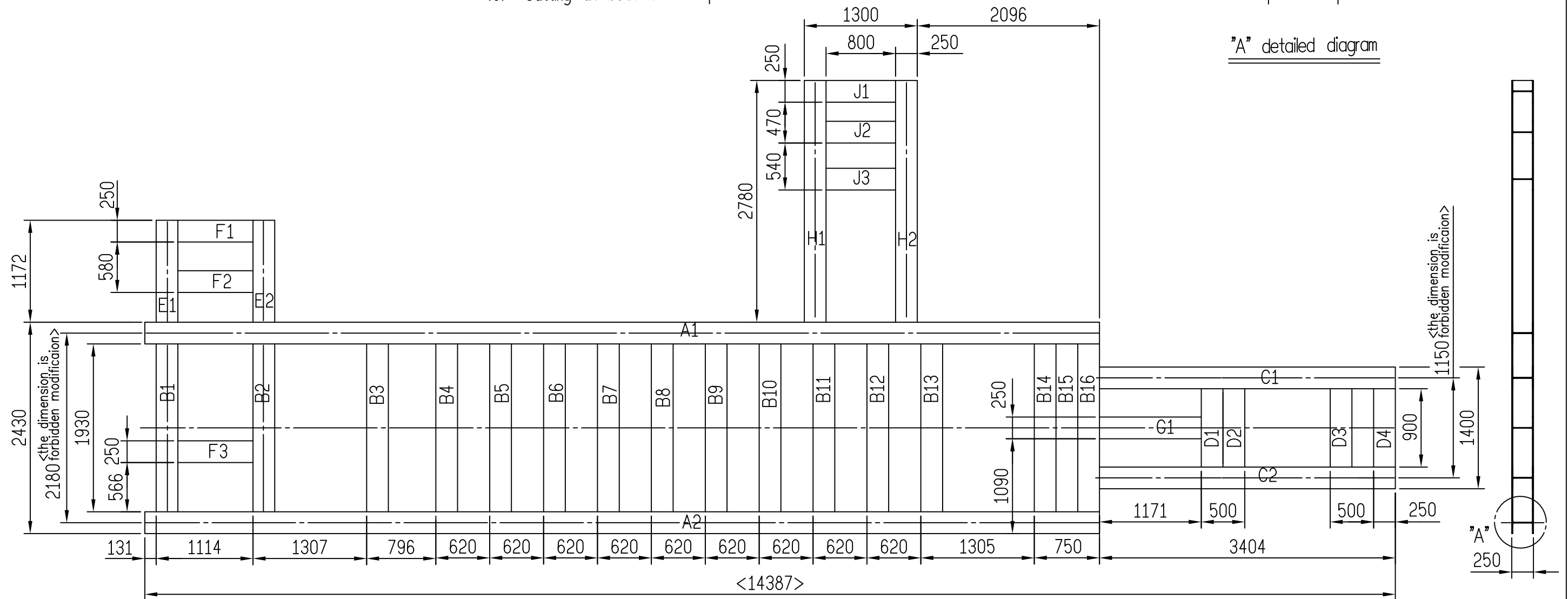
Applied sect	Machinery installation
No.	V1CPDEA150



- Cutting at both ends-16 pcs
- <C> One end cutting-2 pcs
- <D> Cutting at both ends-4 pcs
- <E> One end cutting-2 pcs
- <F> Cutting at both ends-2 pcs
- <G> Cutting at both ends-1 pc
- <H> One end cutting-2 pcs
- <J> Cutting at both ends-3 pcs



"A" detailed diagram



Material:

- <A> 250X250 H-steel X10983L-2Pcs
- 250X250 H-steel X2170L-16Pcs
- <C> 250X250 H-steel X3524L-2Pcs
- <D> 250X250 H-steel X1140L-4Pcs
- <E> 250X250 H-steel X1292L-2Pcs
- <F> 250X250 H-steel X1104L-3Pcs
- <G> 250X250 H-steel X1411L-1Pc
- <H> 250X250 H-steel X2900L-2Pcs
- <J> 250X250 H-steel X1040L-3Pcs

Remark:<01>If H-steel specification be change,that 1930 and 2430L must be change.
<Because dimension 2180 and 1150L don't change>.

Applied sect	H steel frame soldering drawing for M/C foundation-3000T
No.	V1CPDEBASE